

Automatic Door Bottom Seals



RP3



A cam activated, lifting action, automatic door bottom seal. It is quick and easy to install without cutting or removing the door and uses concealed fasteners. This DIY product has been granted an Australian Design Award. Ideal for residential and light commercial applications such as motels and retirement villages.

Can be used in conjunction with Raven threshold plates.

Location: Bottom of single inward opening butt hinged doors.

Min/Max Gap: 3mm to 16mm.

Finish: Satin clear (silver), bronze or bright gold anodised aluminium (15µm).

Fixing: Screw fix. Zinc plated, cross recess head S.T. screws supplied. Fixing holes are pre-slotted.

Seal: RP303. Black EPDM or TPE.

Sizes: 915mm and 1220mm maximum (between door stops).

Approvals

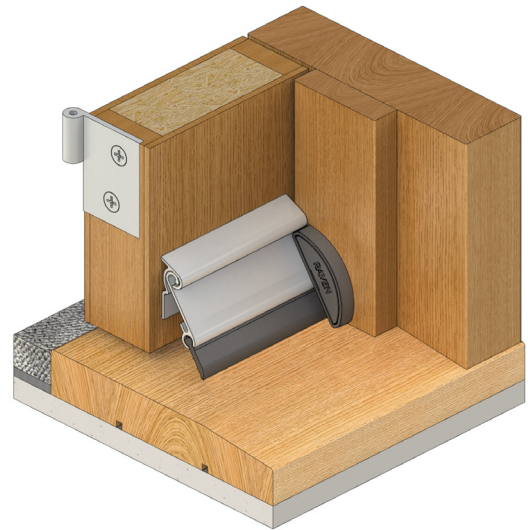
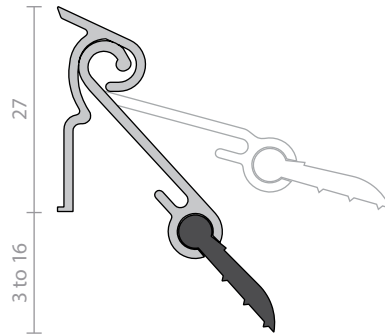
Fire Gasket flammability index < 5 when tested to AS1530.2.

Energy NCC Pt. 3.12.3.3 & J3.4.

Durability Tested to over 1,000,000 operating cycles without failure.

Insects/Vermin AS4674, 2.1.5(iv), 2.1.7.

Patented.



RP8Si



A concealed, automatic door bottom seal that is spring loaded to lift clear of the floor when the door is opened. It is acoustically designed, featuring silicon gaskets for medium temperature smoke and fire door applications. Operated automatically by pressure against the door jamb on its adjustable strike. RP8Si can also be fitted into the bottom rail of a metal door by the fabricator. Has a level adjustment to achieve an optimum seal.

Location: Fully morticed into a 15mm x 34mm groove into the bottom of single and double butt hinged timber and metal doors.

Min/Max Gap: 3mm to 13mm.

Finish: Satin clear (silver), bronze or black anodised aluminium (15µm).

Fixing: Concealed screw fix with colour matched stainless steel escutcheon plates and screws supplied.

Seal: RP308Si. Grey silicon rubber (SE).

Sizes: 1500mm, 1220mm, 1070mm, 920mm, 820mm, 600mm, 380mm to 295mm(min). Seals cut back to exact size.

Approvals

UL R37913.

Certifire CF 5710.

ANSI/BHMA A156.22

Acoustic AUS/NZ: NCC Spec. F5.5.

UK/EU: Approved Document E. Rated to BS EN ISO 717-1.

Fire AUS/NZ: NCC Spec. C3.4.

AS1530.4 & AS/NZS 1905.1. NZ BC Compliance Doc. C/AS1 6.19.2 & App. C6.1.1.

UK/EU: Approved Document B. BS 476 Pt. 20 & 22 (similar to BS EN 1634-1).

FRL & FRR-/240/60 and FD240. 🔥 Gasket flammability index 1 when tested to AS1530.2.

Smoke NCC Spec. C3.4. AS1530.7 & BS EN 1634-3. Meets smoke leakage rates specified in AS6905 & EN 13501-2 "Sa", "Sm".

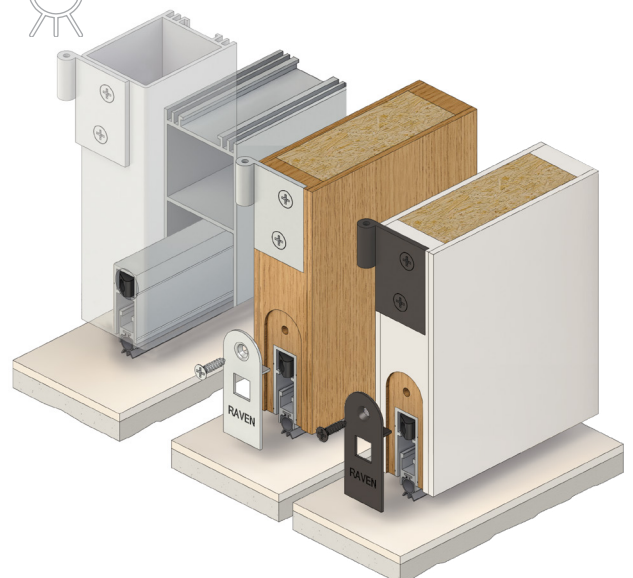
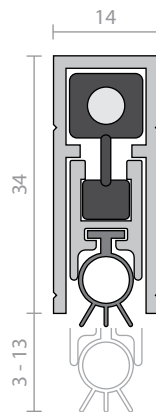
Energy NCC Pt. 3.12.3.3 & J3.4.

Design for Access and Mobility High efficiency mechanism to assist with the closing force requirements detailed in AS1428.1.

Durability Tested to over 1,000,000 operating cycles without failure.

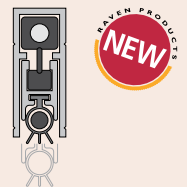
Insects/Vermin AS4674, 2.1.5(iv), 2.1.7.

Patented.



RP8FZ

p.101



Intumescent fire and hot smoke seal for fire engineered solutions.