

## RP66



A flush fitting threshold plate designed for use on internal doors with carpeted floors. The RP66 can be used in conjunction with Raven door bottom seals such as the RP38Si to provide an optimum sealing surface as carpets can flatten and thus reduce sealing effectiveness. RP66 has concealed fixings with self adhesive aluminium insert.

**Location:** Door sill of internal doors with carpeted sills.

**Finish:** Satin clear (silver) anodised aluminium (25µm).

**Fixing:** Screw fix with self adhesive insert. Zinc plated, cross recess head CSK S.T. screws supplied.

**Sizes:** Available in stock lengths.

### Approvals

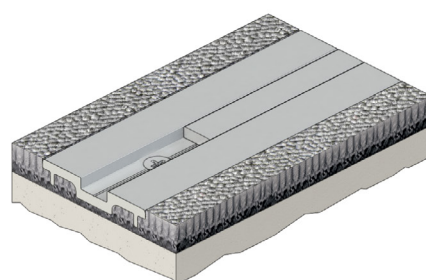
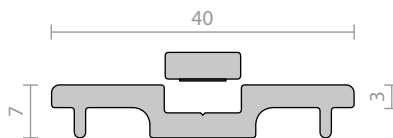
**Access & Mobility AUS/NZ:** NCC D2.15 & D3.3. AS1428.1. NZ BC Compliance Doc. D1/AS1 1.3.2.

**UK/EU:** Approved Document M.

**Fire AUS/NZ:** NCC Spec. C3.4. AS1530.4 & AS/NZS 1905.1. NZ BC Compliance Doc. C/AS1 6.19.2(a) & App. C6.1.1.

**UK/EU:** Approved Document B. BS 476 Pt. 20 & 22 (similar to BS EN 1634-1).

**FRL & FRR-/240/30.**



## RP77, RP98



Heavy duty threshold ramps with a ribbed design which can be positioned back to back to form a two way threshold ramp conforming to NCC Pt. D2.15 Thresholds (b).

The RP77 and RP98 can be used in conjunction with Raven door bottom seals to prevent rain, draughts, noise and smoke infiltration. Suitable for use with most floor pivots.

Ideal for commercial shop fronts providing a neat ramp detail between carpets or tiles at door ways.

Can also be used to provide a ramped frame for internal door mats.

**Location:** Door sill.

**Finish:** Satin clear (silver) anodised aluminium (25µm).

**Fixing:** Screw fix. Zinc plated, cross recess head CSK S.T. screws supplied.

**RP98** Can be fastened with builders adhesive for concealed fixing.

**Sizes:** Available in stock lengths. Specify longer length than doorway to allow for neat installation around door frame.

### Approvals

R37913

**Access & Mobility AUS/NZ:** NCC D2.15 & D3.3. AS1428.1. NZ BC Compliance Doc. D1/AS1 1.3.2.

**UK/EU:** Approved Document M.

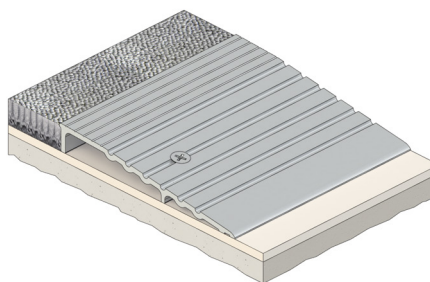
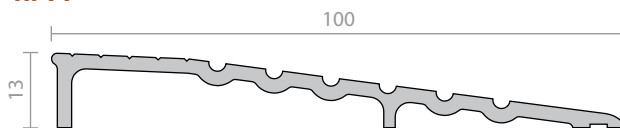
**Fire AUS/NZ:** NCC Spec. C3.4. AS1530.4 & AS/NZS 1905.1. NZ BC Compliance Doc. C/AS1 6.19.2(a) & App. C6.1.1.

**UK/EU:** Approved Document B. BS 476 Pt. 20 & 22 (similar to BS EN 1634-1).

**FRL & FRR-/240/30.**

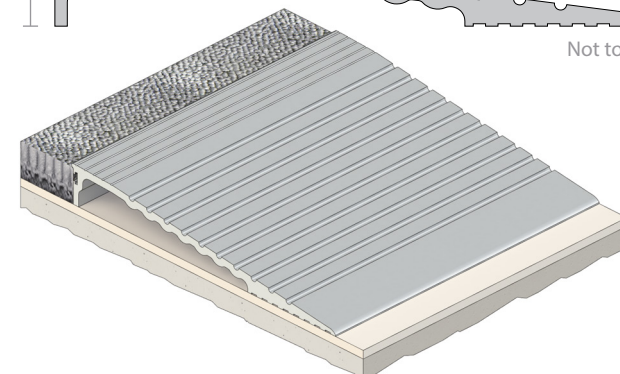
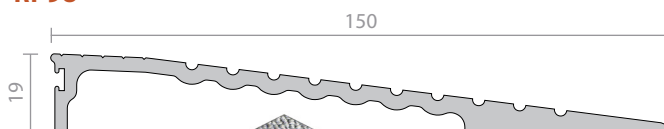
**BAL ≤FZ** when used with a BAL rated door bottom seal in accordance with AS 3959.

### RP77



Not to scale

### RP98



Not to scale